

# *Marina Caribe apartments*

## Superb facilities for you to enjoy....

Ideally located, just 150m from the beach, the “Marina Caribe” apart-hotel offers everything from one of the best investments on the international property market, to a relaxed upmarket holiday in the year round sunshine. The marina is a 100km walk, and there are also many wonderful bars and restaurants within easy walking distance.

The Hilton Hotel is also just a short walk away and offers evening entertainment and Casino. Though close to the amenities, the Marina Caribe will retain it’s own unique and tranquil atmosphere, whilst offering sumptuous surroundings to owners and guests alike.

We are currently negotiating with several major hoteliers to secure the best possible package on behalf of our clients.

A 10 year rental guarantee must be undertaken by the chosen hotelier in the best interest of all parties, ensuring long term investment security.

With 10 floors, the complex offers excellent access to the Marina and pool boasting superb ocean views. Externally, the development offers designated areas for service facilities as well as relaxation spaces and pool furniture. 22 parking lots are located within the complex’s basement level.





### The Esparta (Type B)

*One bedroom & one bathroom apartment 55m<sup>2</sup> total floor space including terrace*

A medium size apartment offering accommodation for up to 4 people: 2 in the bedroom and 2 in the living room.



### The Merida (Type A)

*Studio apartment with one bathroom 47-52m<sup>2</sup> total floor space including terrace\**

The Merida apartment is the smallest accommodation on the complex. As a studio, it has facilities for 2 people as well as a moderate size balcony.

\* dependant on plot no.

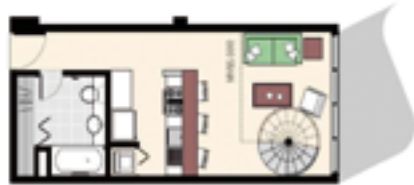


### The Bolivar (Type C)

*One bedroom & two bathroom apartment 73-79m<sup>2</sup> total floor space including terrace\**

The Bolivar offers one bedroom and two bathrooms and can accommodate up to 4 people: 2 in the bedroom and 2 in the living room.

\* dependent on plot no.



### The Grenada (Type F)

*One bedroom duplex apartment 80m<sup>2</sup>  
total floor space - no terrace*

The Grenada is a duplex apartment. On the first floor you will find a big bathroom, kitchen, space for washing machine and refrigerator, living room and staircase. Located on the ground floor, it will have direct access to a private parking lot and pool. The mezzanine level may be used as a studio or with some additional renovations, as a private room. The main room and another bathroom are also located on this level.



### The Tortuga (Type D) only one remaining (POA)

*Two bedroom & two bathroom apartment 121m<sup>2</sup>  
total floor space including terrace\**

The Tortuga is the largest accommodation available and has 2 bedrooms, 2 bathrooms and a large terrace. You can access to the terrace directly from both rooms and from the living room.

\* dependent on plot no.



### The Valencia (Type E)

*Two bedroom & two bathroom apartment 99m<sup>2</sup>  
total floor space including terrace*

Similar to the Tortuga, the Valencia has 2 bedrooms, 2 bathrooms and direct access to the terrace from the living area.



## Why Marina Caribe?

- Full rental management by UK company
- Guaranteed rental income of 6% of purchase price for 12 months
- Up to 4 weeks off peak own use on guaranteed rental scheme
- Long term 10 year rental income guaranteed
- Excellent capital growth potential

### 1st floor

Lobby, administrative offices, concierge, pool, recreational areas, shop and the restaurant which will have direct access from the lobby (through the lobby bar) and from the pool. In the west wing, you will find the 1st floor of duplex apartments (Type F).

### 2nd floor (Mezzanine)

Internet rooms, offices, commercial areas and the 2nd level of duplex apartments.

### 3rd - 9th floors

The remainder of the apartments are located in these floors. All apartments will have tall glass door-windows to access private balconies, offering uninterrupted views of the ocean and marina.

### 10th floor

This floor has been designed as a recreation and conferencing area. Offering more than 1,600m<sup>2</sup>, this area includes a spa, a gym and shallow pool, which will be available for guests to enjoy throughout the day. All areas will offer stunning views and a relaxing atmosphere.

